

TO BEAVER SPRINGS

# LEGEND

- STATE FOREST BOUNDARY
- PARKING AREA
- COUNTY LINE
- STATE HIGHWAY
- IMPROVED DIRT ROAD
- ONLY PURPLE BLAZED TRAILS APPROX. 20 MILES OF TRAILS
- TWO TRACK TRAIL-EASIEST-3.9 miles
- TRAIL-MORE DIFFICULT-14.2 miles
- TRAIL-MOST DIFFICULT-2.2 miles
- VISTA
- END OF TRAIL-DO NOT ENTER
- BRIDGE

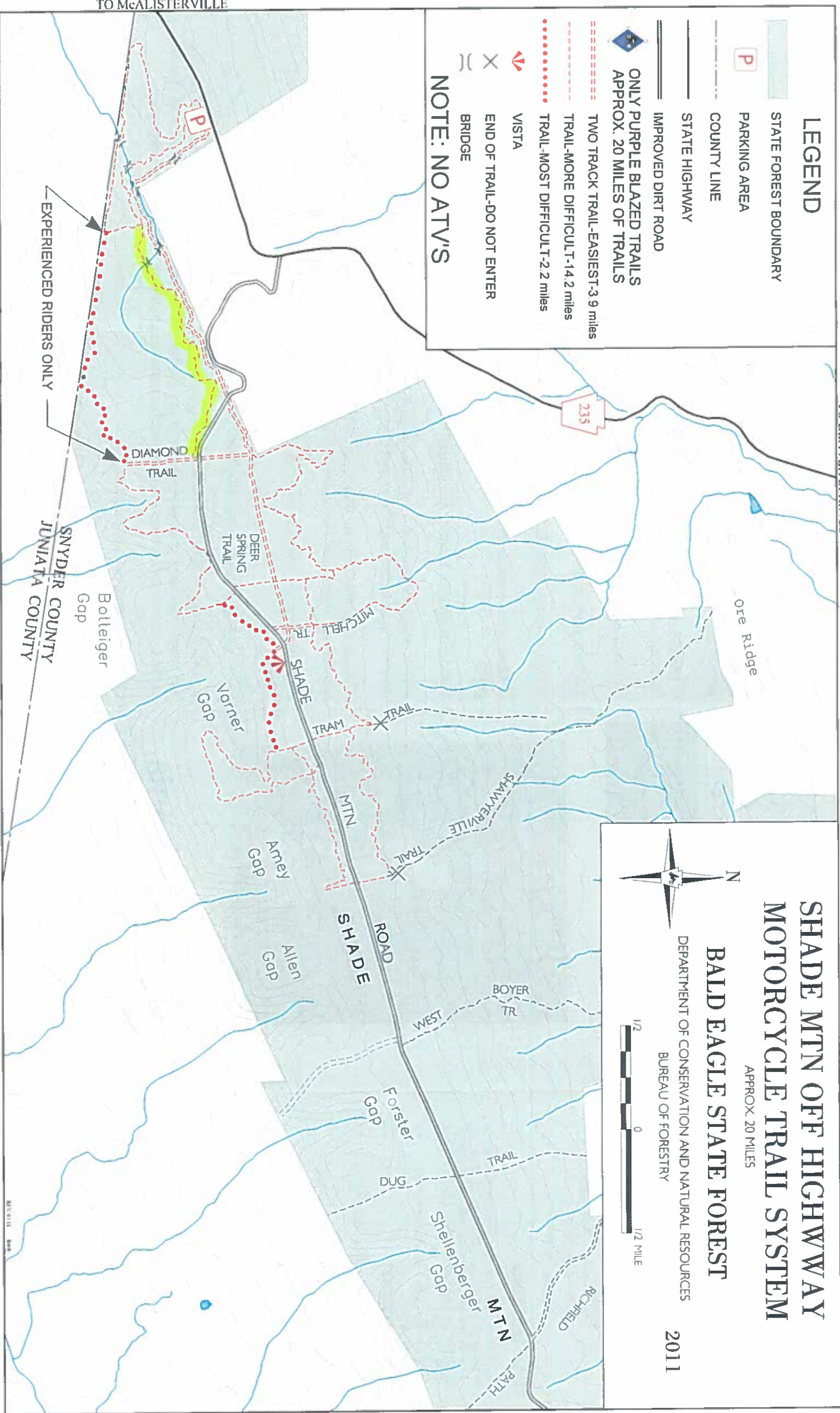
**NOTE: NO ATV'S**

# SHADE MTN OFF HIGHWAY MOTORCYCLE TRAIL SYSTEM

## BALD EAGLE STATE FOREST

DEPARTMENT OF CONSERVATION AND NATURAL RESOURCES  
BUREAU OF FORESTRY  
2011

APPROX. 20 MILES



TO McALISTERVILLE