

Clarion River Water Trail Middle Section Public Access Sites

River Miles are used to identify the locations of various sites along the river. River Mile 0 is at the confluence of the Clarion River and the Allegheny River. "River Left" and "River Right" are used to indicate which side of the river a site is on. Orient yourself looking downstream to determine right and left. PFBC (PA Fish & Boat Commission) and DCNR (PA Department of Conservation and Natural Resources) launches require boat registration (other states accepted) or a launch permit from a state park office or PFBC.

- 76 Irwin Run Canoe Launch** Lat 41 24 00 Lon 78 54 20 Located on the Allegheny National Forest upstream of Hallton, this hand carry launch provides access to paddlers. There is parking for 7-10 cars. This site can be very congested on spring and summer weekends. A restroom is located onsite. Walk-in camping is permitted upstream of the parking lot.
- 74 Hallton Canoe Launch** Lat 41 24 04 Lon 78 55 57 This hand carry launch is located on SGL 28 in the town of Hallton where Spring Creek empties into the Clarion River. There is parking for 10-12 cars in an unimproved lot.
- Heath Canoe Launch** Lat 41 21 00 Lon 79 00 57 Located along PA 949 across from the Heath Trout Nursery, this hand carry launch provides parking for 15-20 cars.
- 67 Clear Creek Canoe Launch** Lat 41 19 59 Lon 79 06 13 Located in Clear Creek State Park, this hand carry launch provides parking for 12-15 cars. Overnight parking is allowed with a permit from the state park office. Facilities include cabins, developed camping, picnic areas, restrooms, showers, public phone and drinking water.
- 61 Barnett Canoe Launch** Lat 41 20 26 Lon 79 08 04 Located on PA 899 downstream of Clarington, this hand carry launch provides parking for 10-15 vehicles. A seasonal restroom is located onsite.
- 58 Cook Forest Canoe Launch** Lat 41 19 36 Lon 79 10 31 Located in Cook Forest State Park, this hand carry launch provides parking for 10-12 cars in an unimproved lot. A seasonal restroom is located onsite.
- 54 Cocksburg Canoe Launch** Lat 41 19 55 Lon 79 12 28 This hand carry launch is located just upstream of the PA 36 bridge over the Clarion River. Restrooms, public phone and limited parking are available at the state park office. This area can be very congested on warm weather weekends. Rental cabins are within walking distance of the river.
- 50 Gravel Lick Canoe Launch** Lat 41 18 18 Lon 79 14 41 This hand carry launch is located about one mile downstream of the Gravel Lick Bridge. There is parking for 10-15 cars.
- 46 Mill Creek Boat Launch** Lat 41 14 05 Lon 79 19 18 Located on State Game Lands 74 along the upper reaches of the Piney Reservoir, this launch provides access for motorboats and paddlers. Piney Reservoir allows unlimited horsepower, paddlers are advised to avoid summer weekends or seek shallow waters. Parking for 10-12 vehicles with trailers. Parking can be crowded on summer weekends. A seasonal restroom is onsite.

	Jan	Feb	Mar	Apr	May	Jun	Jul	Aug	Sep	Oct	Nov	Dec
Avg. High(F)	32°	35°	46°	57°	68°	76°	80°	79°	72°	61°	48°	37°
Avg. Low(F)	14°	15°	23°	32°	43°	52°	56°	55°	47°	36°	29°	21°
Avg. Precip.(in)	3.0	2.6	3.5	3.6	4.1	5.5	4.9	4.1	4.3	3.2	3.5	3.4
Sunrise(AM)	7:41	7:13	7:32	6:42	6:03	5:49	6:02	6:30	7:00	7:30	7:05	7:35
Sunset(PM)	5:17	5:54	7:26	7:58	8:28	8:51	8:49	8:18	7:30	6:41	5:03	4:54
Gauge(CFS)	1,730	1,770	2,780	2,530	1,840	1,170	797	650	700	828	1,360	1,800

(Sunrise and Sunset are the 15th of each month - including daylight savings time)



Cardinal flowers near mile 65



Bald eagles nest in several places along the Clarion River



Old growth forest at Cook Forest State Park near mile 51-river right



Cocksburg public canoe launch



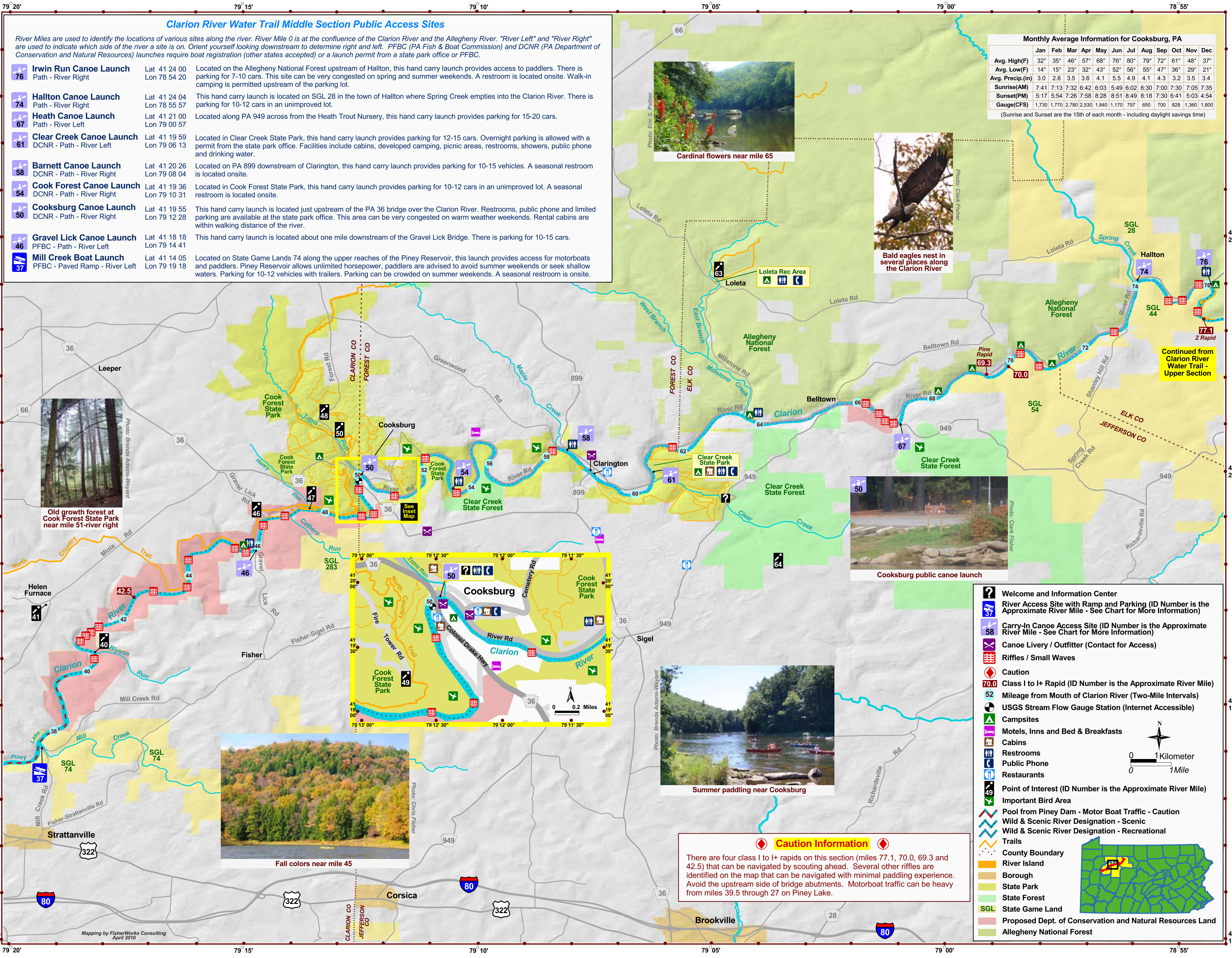
Fall colors near mile 45



Summer paddling near Cocksburg

Caution Information

There are four class I to I+ rapids on this section (miles 77.1, 70.0, 69.3 and 42.5) that can be navigated by scouting ahead. Several other riffles are identified on the map that can be navigated with minimal paddling experience. Avoid the upstream side of bridge abutments. Motorboat traffic can be heavy from miles 39.5 through 27 on Piney Lake.



Welcome and Information Center

- River Access Site with Ramp and Parking (ID Number is the Approximate River Mile - See Chart for More Information)
- Carry-In Canoe Access Site (ID Number is the Approximate River Mile - See Chart for More Information)
- Canoe Livery / Outfitter (Contact for Access)
- Riffles / Small Waves
- Caution
- Class I to I+ Rapid (ID Number is the Approximate River Mile)
- Mileage from Mouth of Clarion River (Two-Mile Intervals)
- USGS Stream Flow Gauge Station (Internet Accessible)
- Campsites
- Motels, Inns and Bed & Breakfasts
- Cabins
- Restrooms
- Public Phone
- Restaurants
- Point of Interest (ID Number is the Approximate River Mile)
- Important Bird Area
- Pool from Piney Dam - Motor Boat Traffic - Caution
- Wild & Scenic River Designation - Scenic
- Wild & Scenic River Designation - Recreational
- Trails
- County Boundary
- River Island
- Borough
- State Park
- State Forest
- SGL State Game Land
- Proposed Dept. of Conservation and Natural Resources Land
- Allegheny National Forest

Scale: 0 to 1 Mile / 0 to 1 Kilometer